

NOTICE TO MARINERS



Notice of activities associated with survey operations on Seagreen Offshore Wind Farm

Date of Issue	16/09/2020	Notice Number	03/2020 REVISION 1
---------------	------------	---------------	--------------------

BENTHIC DROP-DOWN VIDEO (DDV) SURVEY - REVISION 1

Contact Details for Marine Coordination and Fisheries Liaison

The following contact can provide more information if required:

Telephone Number (Day Operations)	+44 (0) 7932 229828
Email for Marine Coordinator	graeme.watters@sse.com
Address	Seagreen Wind Energy Ltd 1 Waterloo Street Glasgow Glasgow G2 6AY

Fisheries liaison is coordinated by Brown and May Marine Ltd. For all fisheries enquiries, Alex Winrow-Giffin is primary contact:

Telephone Number	+44 (0) 1379872144
Mobile number	+44 (0) 7760 160039
Email	Alex@brownmay.com
Address	Brown and May Marine Progress Way Mid Suffolk Business Park Eye, Suffolk IP23 7HU

1. Area of Planned Activity.

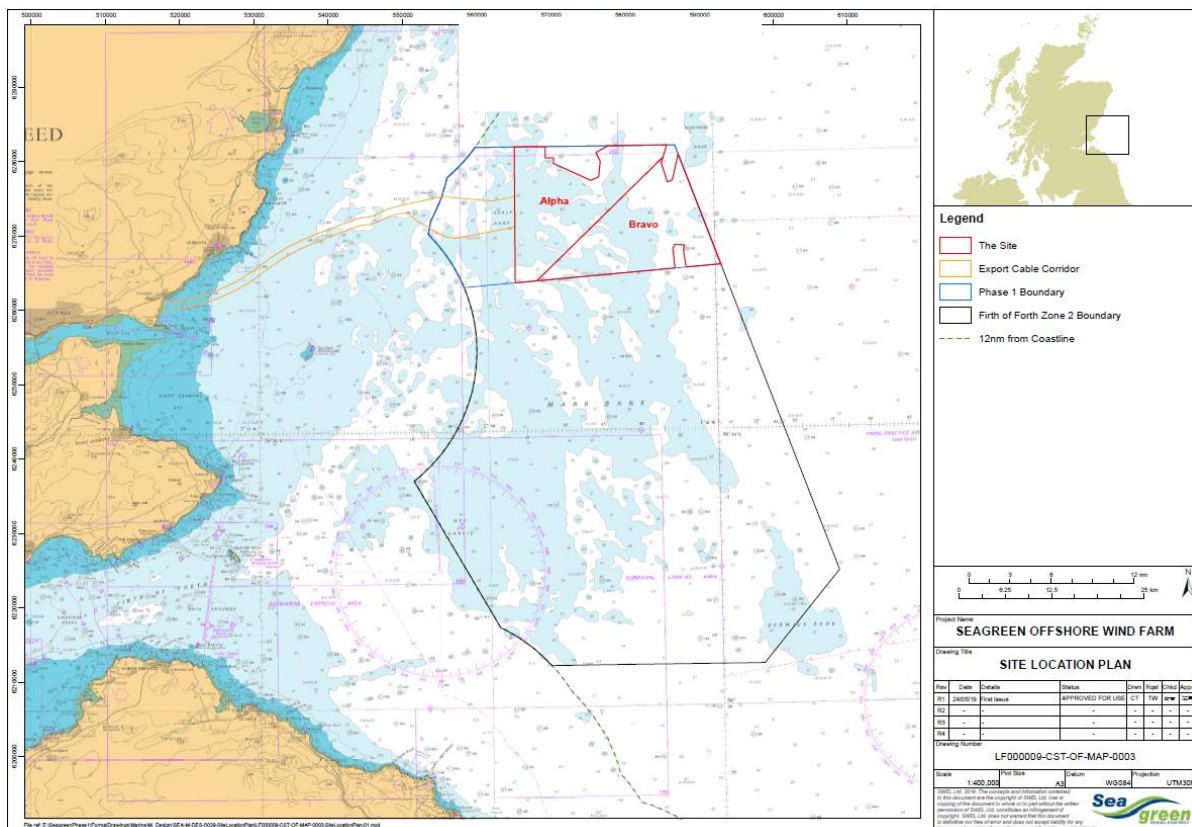
A Benthic DDV survey will take place at various locations within the Offshore Wind Farm site and the Export Cable corridor. The coordinates of the survey area are provided in the following table and shown in the map below.

ID	Latitude (DDM WGS 84)	Longitude (DDM WGS 84)
Site Boundary	56° 40.606' N	1° 36.151' W
Site Boundary	56° 39.923' N	1° 34.627' W
Site Boundary	56° 31.903' N	1° 29.311' W
Site Boundary	56° 30.803' N	1° 56.378' W
Site Boundary	56° 40.653' N	1° 56.226' W
Cable route	56° 29.633' N	2° 42.596' W
Cable route	56° 30.355' N	2° 36.155' W

NOTICE TO MARINERS



ID	Latitude (DDM WGS 84)	Longitude (DDM WGS 84)
Cable route	56° 31.970' N	2° 30.614' W
Cable route	56° 33.916' N	2° 25.019' W
Cable route	56° 35.741' N	2° 15.257' W
Cable route	56° 36.732' N	2° 9.503' W
Cable route	56° 36.117' N	1° 57.212' W
Cable route	56° 35.579' N	1° 57.262' W
Cable route	56° 36.192' N	2° 9.527' W
Cable route	56° 35.086' N	2° 16.700' W
Cable route	56° 33.647' N	2° 23.746' W
Cable route	56° 31.279' N	2° 30.706' W
Cable route	56° 29.790' N	2° 36.120' W
Cable route	56° 29.195' N	2° 43.062' W



2. Activity Description.

Due to adverse weather conditions the Benthic DDV Survey did not commence on the date stated in the previous notice.

An improvement in weather conditions will allow the survey to commence tomorrow, 17th September 2020.

NOTICE TO MARINERS



On behalf of Seagreen Offshore Windfarm Ltd, APEM Ltd will conduct a Benthic DDV survey within the wind farm site and the export cable corridor.
 Mobilisation of the survey vessel, Waterfall, will now take place tomorrow, 17th September 2020.
 The survey will involve drop-down video camera transects and vertical camera drops at sample locations within the wind farm site and export cable corridor as shown in the table and map above.

3. Vessel associated with this activity.

Vessel Name - Waterfall	
General Description and Dimensions:	CTV/ survey vessel. 15m LOA * 6.5m beam, 1.7m draught
Call Sign:	2CBT4
MMSI:	235071392
Satellite communications details	n/a
Direct Bridge/ Masters Number	Bill Ruck 07775 802963
Onshore Representative:	Rob McHugh 07766 006547
Offshore Fisheries Liaison Officer (if applicable)	n/a



NOTICE TO MARINERS



4. General Safety Advice

All vessels engaged in the construction activity will exhibit appropriate lights and shapes prescribed by the International Regulations for Preventing Collisions at Sea; relative to their operations. All vessels engaged in the activity will also transmit an Automatic Identification System (AIS) message.

ALL VESSELS ARE REQUESTED to give the survey vessel engaged in the Benthic DDV survey activity a wide berth.

MARINERS ARE REMINDED to navigate with caution and keep continued watch on [VHF Ch. 70 / 16] when navigating the area.

5. Distribution List

A central list of recipients is maintained by the Marine Coordinator; if you are not the appropriate recipient of these notices, or do not wish to receive the notices in the future, please contact us at the address included in Section 1 of this notice.